

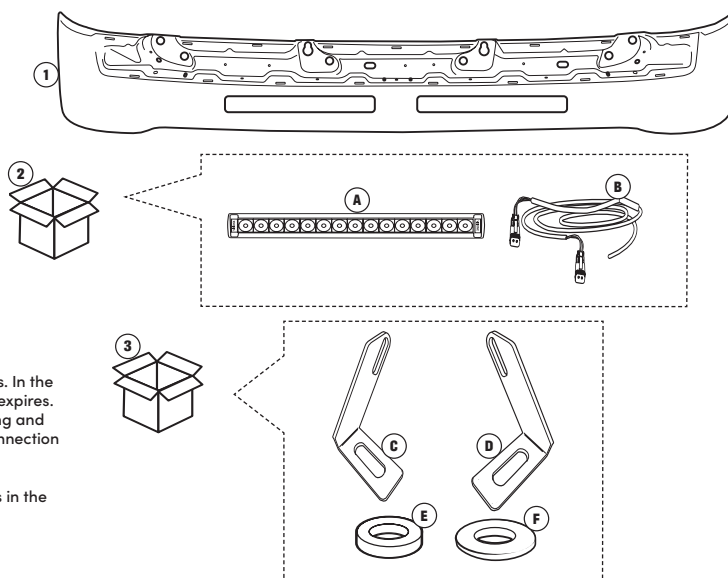
CONTENTS:

Pos	Name:	Art no:	Pcs
1	Sunvisor for all Volvo FH/FM 4/5, FH16, Aero, Globetrotter + XL and FMX prepared for Vision X	21102	1
2	Vision X kit* (A) Vision X LED-bars (B) Y-cable	8021	1 2 1
3	Mounting kit for Vision X (C) Bracket left, Vision X for Volvo (D) Bracket right, Vision X for Volvo (E) Spacer Washer M8x3 mm (F) Washer 8,4x24x2 mm	2102	1 2 2 8 8

*LED-bars and Y-cable only included with article number: 8021

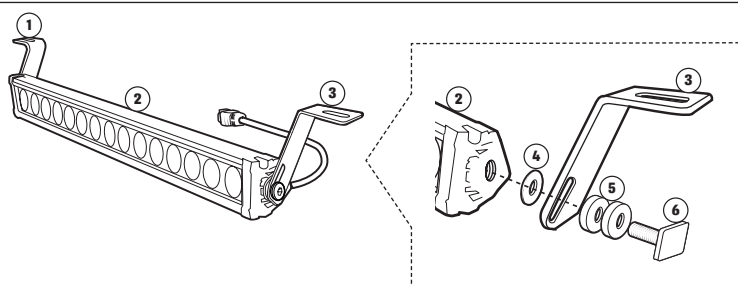
IMPORTANT!
All installations should be done by experienced mechanics/vehicle electricians. In the event of your own modifications or making holes in the product, the warranty expires. Always follow the truck manufacturer's bodywork instructions regarding drilling and wiring in the cab. The same applies to the dimensioning of cabling and the connection of lighting.

TruckStyle Sweden AB does not take responsibility for any damage that occurs in the event of an incorrect installation.



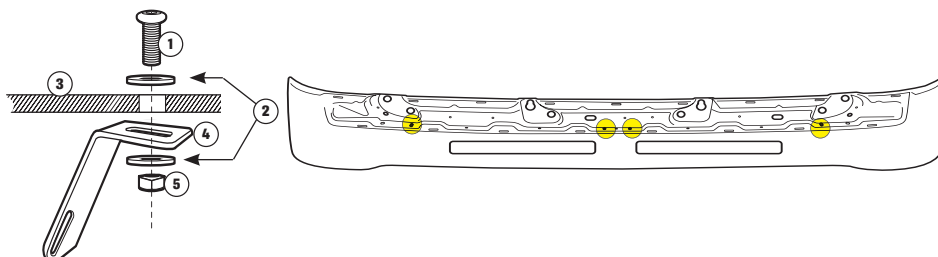
- Place the left bracket (3) and right bracket (1) on the respective LED-bar (2) with attached fasteners (4-6). Repeat and place the fasteners on the next LED-bar.

- Right bracket
- LED-bar
- Left bracket
- Washer included in Vision X box
- 2x Spacer washer M8x3
- Square head screw M8x20 included in Vision X box



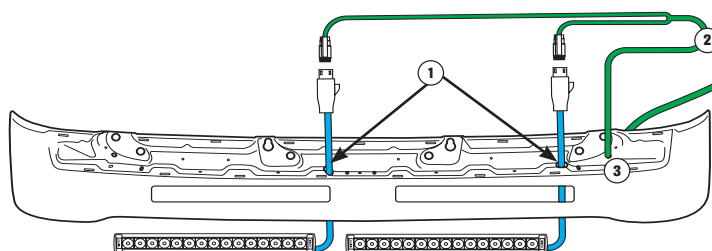
- Place the LED-bars in the sunvisor with mounting hardware (1-5) in intended holes (yellow marking). Repeat and fit the fasteners on the next one LED-bar.

- Hexagonal screw M8x25 included in Vision X box
- Washer 8,4x24x2
- Sunvisor
- Bracket for LED-bar
- Locknut M8 included in Vision X box



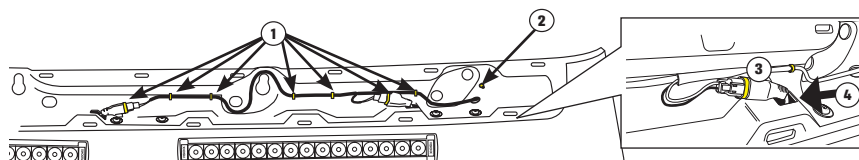
- Pull cables from the LED-bars with connectors through the holes (1) in the sunvisor. Then pull the Y-cable (2) through the hole (3) and out on the back of the sunvisor. Connect the Y-cable's connectors to the LED-bar connector.

- Hole for cable from LED-bars
- Y-cable
- Hole for Y-cable



- Pull 7 cable ties (1) from the back of the sunvisor through the pre-drilled holes and fasten the wiring on the front of the sunvisor. Pull 1 cable tie (2) from the front through the pre-drilled hole and fasten the cable on the back of the sunvisor.

- Cable tie
- Cable tie
- Connector from LED-bar with fitted cable tie
- Hole



IMPORTANT! Attach the cable ties to the connectors as in the picture (3), so that they are centered in the holes (4).

- When the electrical connection between the vehicle and the LED-bars is performed (performed by electrician). Turn on the LED-bars and adjust the light pattern, finally tighten all the screws and nuts.